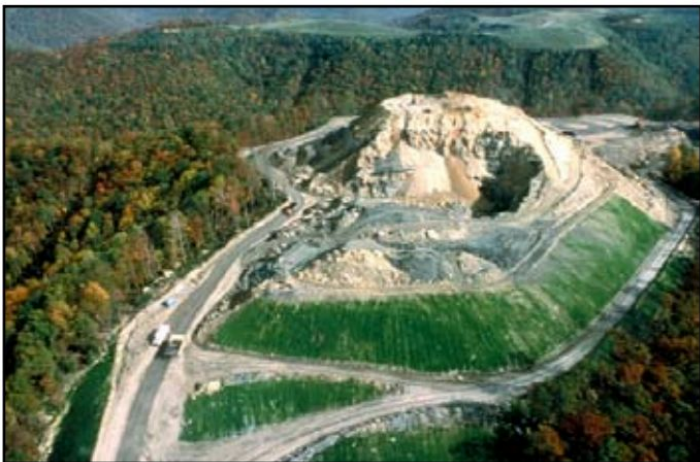
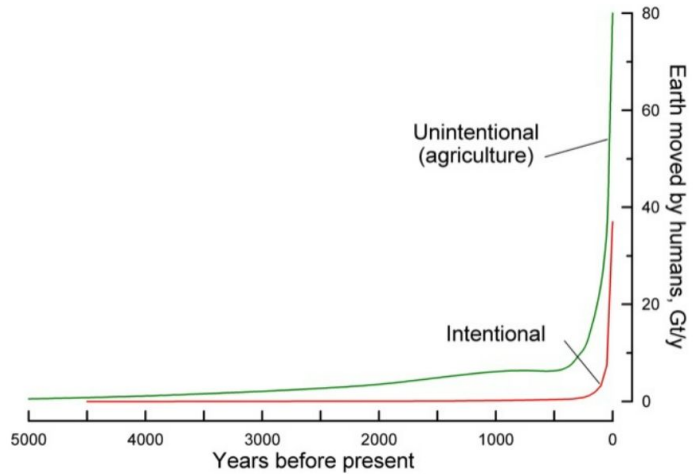


Today we looked at a problem set involving earth movement and erosion. Roger Hooke, University of Maine, asserts that Anthropocene earth disturbances present a much more significant, urgent problem, than greenhouse warming. The diagram to right is from Hooke et al., 2002. Students used it and other data to compare modern rates of erosion to those of the past, obtaining additional evidence of the Anthropocene.



We looked at the differences between intentional erosion (clearing lands for homes, farmland, roads, mining operations) and unintentional erosion (soil loss due to irrigation and wind).

Using articles from the Climate

Change Institute, our notes, and help from Professor Christine Siddoway, we were able to answer numerous questions involving the mining process, soil erosion, and shoreline retreat.

