



**20
SEC**

**WASH YOUR
HANDS OFTEN**

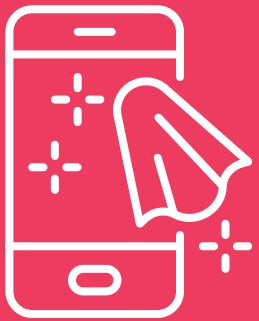


WEAR A MASK

Wear a cloth covering over your nose and mouth when in public spaces and when social distancing is not possible.



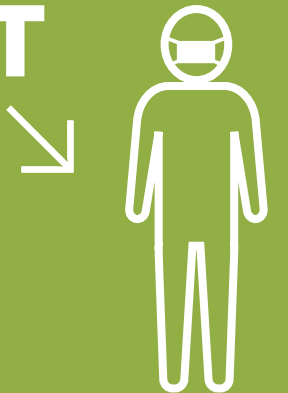
WEARING A MASK IS *REQUIRED* TO ENTER AND USE ALL PUBLIC SPACES ON CAMPUS.



**CLEAN
SURFACES &
OBJECTS**



**STAY
SIX FEET
APART**



**COVER YOUR
COUGHS &
SNEEZES**



AVOID CROWDS & PARTIES

Social situations make the virus spread easily. Spend time with those in your household, like your roommates.



**AVOID
TOUCHING
YOUR FACE**



**STAY HOME
IF YOU FEEL
SICK**

**Student Health Center:
(719) 389-6384**



**COLORADO
COLLEGE**

Reduce the risk. Slow the spread. Care for CC.

Note: Reducing the risk of a COVID-19 outbreak on the CC campus will take all community members practicing social responsibility. Those in violation of college safety and conduct policies may face severe consequences, including suspension, expulsion, termination, and/or removal from campus.